

# Forenta

Morristown, TN U.S.A.

## Bravo Cabinet Shirt Press

Models 610SBV/SBA Single Buck  
Models 620DBV/DBA Double Buck

- Heated Bucks, Faster Drying, Eliminates Chemical Build-Up
- Heads and Bucks are Taller to Finish Larger Shirt Sizes
- Innovative Pre-Inflation Side Air Bags
- Finishes Size 14½ to 20
- Available with Vacuum Hold Down or Tail Clamp
- Operator Dresses Bucks from Same Position on Double Buck



610SBV



620DBV

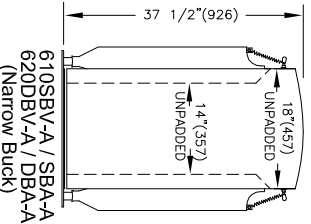
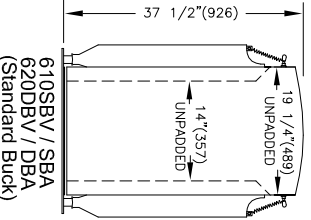
# Specifications

## Models 610SBV/SBA & 620DBV/DBA

<b>Electrical connections</b> 120V 50/60Hz 1PH .5Amps 230V 50/60Hz 1PH .25Amps Electrical connections for Vacuum 208-230V 50/60Hz 3PH 9.7-8.8Amps 460V 50/60Hz 3PH 4.4Amps	610SBV 610SBA	620DBV 620DBA
<b>Steam and Air connection</b>		
Steam Inlet	NPT 1/2"	1/2"
Steam Outlet	NPT 1/2"	1/2"
Rec. steam pressure	PSIG 100-125 kPa 689-862	PSIG 100-125 kPa 689-862
Steam consumption @ 100psig(689 kPa)	BHP 1.5 kg/hr 23.4 lb/hr 51.8	2 31 69
Compressed air	NPT 3/8"	3/8"
Air consumption(per shift)	free air/cycle at 85psig free air/cycle at 586kPa	4.1 cu.ft 116 liters
Rec. air pressure	PSIG 85 kPa 586	85 586
Water Connection (for water spray)	NPT 1/4"	1/4"
<b>Weight (Crated)</b>		
Shipping	lbs 1900 kg 862	2150 975
Vacuum Weight	lbs 150 kg 68	150 68
<b>Dimensions</b>		
A	30"(762) 17"(432)	32"(813) 30"(762)
B		

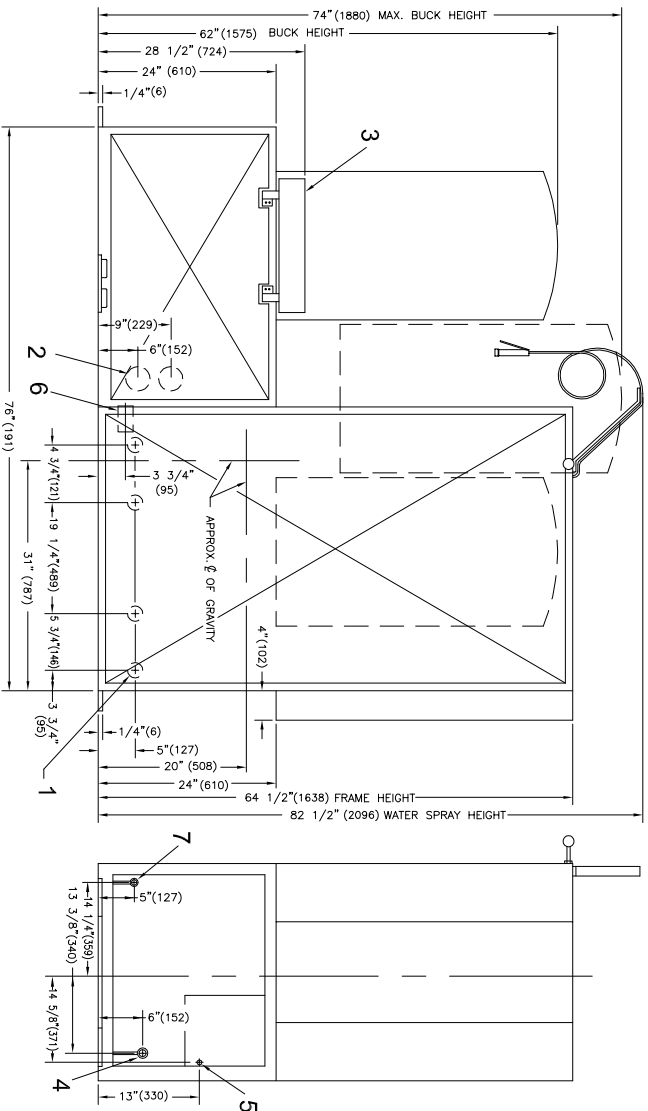
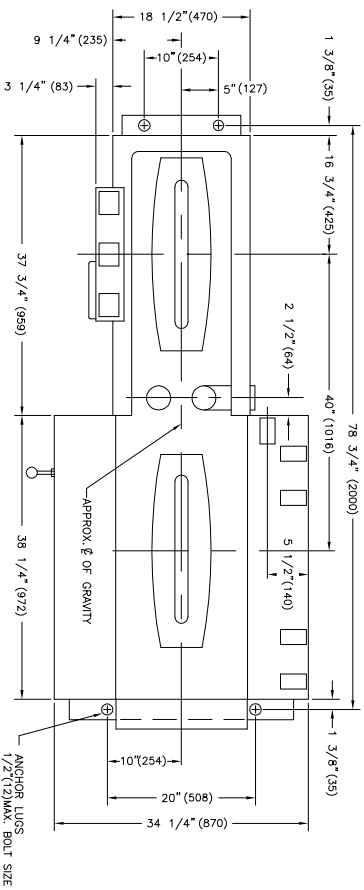
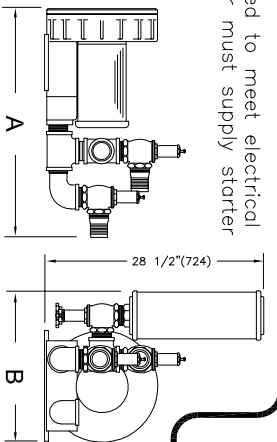
- 1 Steam Outlet ... (3)for 610SBA/SBV & (4)for 620DBA/DBV
- 2 Vacuum connection ... (1)for 610SBV & (2)for 620DBV
- 3 Control Push Buttons
- 4 Air connection
- 5 Electrical connection
- 6 Steam Connection
- 7 Water connection

### BODY BUCK DIMENSIONS



Note: Must be wired to meet electrical codes. Customer must supply starter & disconnect.

### Vacuum Layout



### Detail Line Drawing

(millimeters shown in parentheses)