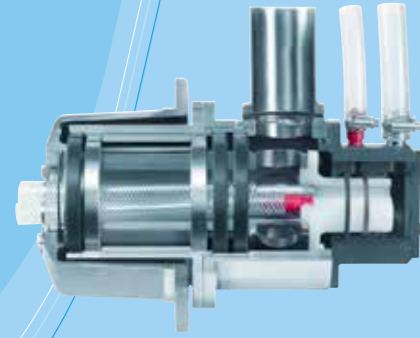
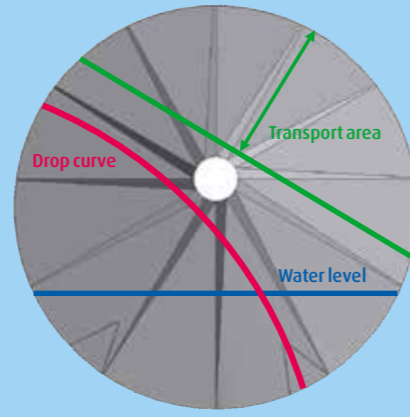




Drain valve with quick-release fastener and sight glass



Rotating head (section)



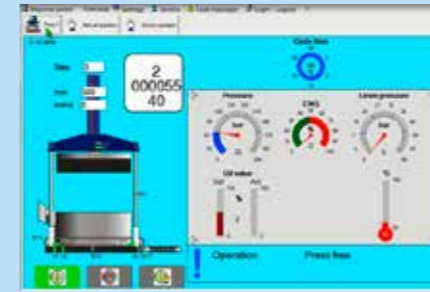
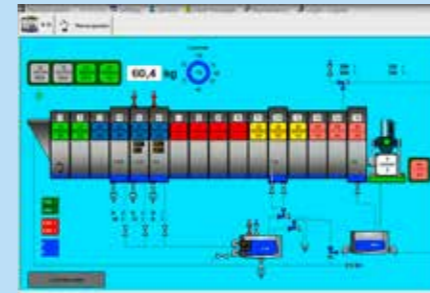
Archimedian helix



Cascade lint filter system LintEx



Storage tank system EcoTank



Smart Automation: High availability thanks to the compound redundancy principle



Tuned to perfection

To adapt to different types of linen, and to optimize media consumption even further, the Senking Universal can be fitted with the following options from our range:

- QuickSoak (pat. pend.) is optionally available and gives an extra shower for the linen in the first compartment for maximum soaking and drenching, achieving best wash performance and highest productivity.
- EcoSafeguard is the automatic monitoring and logging of pH and conductivity value as well as water hardness and ensures a higher quality assurance in the laundry, with more satisfied customers and higher productivity.
- EcoTune (standard configuration) completes the tuning concept: A rotary encoder for individual swiveling angles and the level control in double drums form EcoTune and improves wash quality, provides less wear and tear, and generates lower energy consumption.

- Pre-rinsing with excess press or centrifuge process water to reduce fresh water consumption
- Integral „Spiraliser“ heat exchanger to preheat fresh water
- Version for steam-free operation (JENSEN CleanTech) that includes a gas-operated heating system
- LintEx, the modular cascade filter system
- Additional lint filter combined with specially designed lint catch boxes on the double drums.
- Senking AutoFilter (fully automatically controlled disc filter with regeneration function integrated in the tunnel washer, with stainless steel housing)
- Automatically controlled cooldown and 4 taller wash beaters e.g. for processing polycotton uniforms
- Specially designed recovery tanks for processing dust mats
- EcoTank, the additional large volume storage tank system for an even better separation and up to 100% higher

recovery of process water, especially for frequent color changes

Everything under control: Smart Automation

The recently developed machine control provides the user with a convenient operating interface, together with a high degree of efficiency and safety. Operation is displayed and controlled from an industrial PC with a touch screen. The Interbus design of the modular control enables the entire group of machines to be networked together so that every machine in a full wash line can be viewed and operated from every industrial PC. With conventional controllers, if one operator terminal fails it usually affects the whole system and causes a stoppage. The new control system has the unique advantage of compound redundancy meaning that the wash system can then continue to operate from another PC in the network, thus providing secure operation and avoiding a produc-

tion failure. This high availability saves a lot of time and money. If, even so, a programming error or data loss occurs, the settings that have been previously saved on a flash card can quickly and easily be restored. The user-friendly control system offers you the following advantages:

- The whole of the wash process is displayed in real time
- Individual configuration of up to 100 wash programs
- The highest possible standard of security against production failure and data loss
- Allocation of individual access rights for up to 40 users provide a high degree of protection against programming errors or misuse
- Very user-friendly: Many languages are available for a flexible operation all over the world, even at the same time, e.g. a Spanish operator could work at the tunnel washer's PPC, an American operator at the press and a Chinese operator at the dryers.
- Uniform control hardware on all plant

components

- Convenience of operation thanks to the Windows-based display and the same tabular structure on the individual machines
- Quick and simple data backup on modern storage media
- Clear production statistics
- Detailed maintenance program offering the ability to generate a maintenance schedule for individual periods of time in the future.

In addition JENSEN provides an extraordinary after sales service through a worldwide network of highly qualified Sales and Service Centers and distributors, all with their own maintenance and spare parts services.

Installation

JENSEN is pleased to assist you in planning your laundry by providing excellent advice, layouts and technical data. Authorised JENSEN distributors or JENSEN engineers should carry out the installation to ensure that it is performed correctly.

Service

In addition, JENSEN provides an extraordinary after-sales service through a worldwide network of highly qualified Sales and Service Centres and distributors, all with their own maintenance and spare parts services.

Call us...

JENSEN provides a complete range of heavy-duty equipment for the laundry industry, delivered and installed according to your specifications. Please do not hesitate to contact us for further advice and information, or visit www.jensen-group.com

Local contact

www.jensen-group.com

Explore our equipment on **YouTube**
www.youtube.com/jensengroupcom

SenkingUniversal EN170717_09mar12

Senking Universal

Tuned to perfection:
The versatile tunnel washer that reuses energy and water internally





QuickSoak

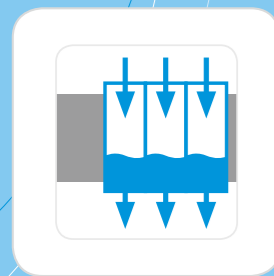
Tuned to perfection: QuickSoak, EcoSafeguard and EcoTune for brilliant wash results



EcoSafeguard

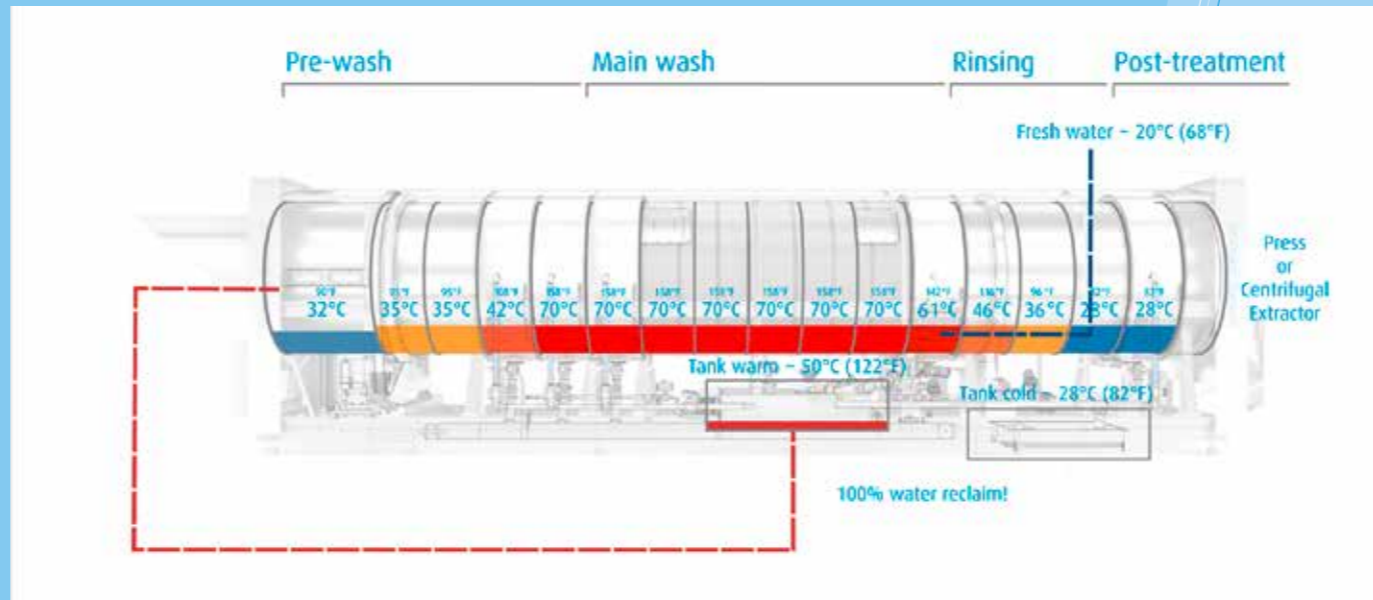


EcoTune



FlexRinse

FlexRinse: Highest flexibility thanks to complete batch separation



State-of-the-art wash process: JENSEN is the master of process technology.



Drum bearings



Toothed chain drive with automatic lubrication system



Wide overflows and high drum perforation for a quick and efficient lint removal



EcoSafeguard process monitoring for a higher productivity

Senking Universal

Tuned to perfection: The versatile tunnel washer that reuses energy and water internally

JENSEN revolutionized the market with the Senking Universal tunnel washer, being the most versatile tunnel washer that reuses energy and water internally. The combination of processing the greatest variety of linen types while keeping consumption at extremely low levels is now tuned to perfection with QuickSoak, EcoSafeguard and EcoTune to reach higher levels of operational efficiency.

This combination of efficiency and productivity has been continuously optimized in recent years through ongoing innovations developments, with the result that even today the Senking Universal can lay claim to a leading position in the world market. More than 3,000 Senking tunnel washers sold around the globe (2015 figures) are ample proof of this.

Have a look inside

In the basic configuration of the Senking Universal, washing is done in standing baths in the pre-wash and main wash areas (bath exchange process) and rinsing is in counter-flow. JENSEN was the first manufacturer in the world to develop this process and bring it to market. Every batch stays in its own bath until the start of the rinse zone and has its own individually programmed quantity of detergent, process water temperature, bath level etc. In the basic version of the Senking Universal the rinse process uses a counter-flow. A patented rinse process ensures that consumption of fresh water is reduced by up to 10%. A drain valve in the first rinse compartment is controlled in such a way that it opens several times and the process water is very rapidly diluted, thus producing an excellent rinse effect and an outstanding lint removal while using a minimal amount of rinse water. For special applications, such as frequent changes in color during the sequence of batches, the rinse zone can also

be made (as an option) with completely separate baths so that rinsing also uses a bath exchange process called FlexRinse®. This FlexRinse process has already been practised successfully in Senking tunnel washers for more than 20 years in their version. As another option, the Senking Universal can be fitted with a device for using excess water from the press or centrifuge in order to save approximately 40% fresh water. In the post-treatment zone the Senking Universal has a double drum with an automatic drain valve that reduces the level in the bath, depending on the program, and this again greatly reduces the consumption of washing additives (acids, starch, softeners etc.). The process water that is drained off is, of course, recovered in a special tank in the tunnel washer.

And action!

An important feature of the Senking Universal is its highly efficient wash action and its reliable transport method. Compared with other tunnel washers, which require considerably

larger drum diameters, the Senking Universal makes far more efficient use of the drum diameter thanks to its patented eccentric Archimedian helix, and enables high drop curves for outstanding wash action. This is reinforced even further by the washboard-type shape of the helix. An optimised drum design ensures an outstanding mechanical action and the most reliable batch transfer. The speed of the drum can be varied using the frequency-controlled drive motor, thus allowing for specific control of the mechanical action required by the goods being processed.

How to save energy and money

A tried and tested wash action with a superior reuse technique has enabled the consumption of resources by the Senking Universal tunnel washer to be considerably reduced. The process water is recovered from various zones and fed to a number of tanks and could reach amazing **100%** reclaim. This water reclamation system allows for the process water's heat and chemistry to be

reused in the pre-wash, main wash, and rinse zones, having been accurately measured and controlled by inductive flow meters. The enormous versatility of Senking Universal tunnel washers means that a great variety of wash processes can be used to meet individual requirements. It goes without saying that this also includes low-temperature cycles. There are also various optional packages that allow the Senking Universal to be adapted to suit special requirements such as the washing of work wear, dust mats and so on.

The heart of the Senking Universal

The heart of the tunnel washer is its drum, with an eccentric Archimedian helix that makes the optimal use of the drum volume and thus produces a highly efficient wash action while securely transporting the linen batch. JENSEN's smart drum design allows a lighter drum without compromising the strength resulting in less energy to operate. This unique design, plus the fact that the helix is fully welded to the inner drum

throughout (with no vertical bulkheads), gives the drum an extraordinary degree of strength and stability. The Senking Universal therefore does not need any oversized drum plates, with their comparatively high weight and consequently greater consumption of drive power. The eccentric design of the helix makes far better use of the drum volume than is the case in conventional machines with drums of similar diameter and depth. Deep beaters ensure that the linen and process water are thoroughly mixed together and the outstanding washing action is made even more efficient by the washboard-shaped helix which offers multi-directional mechanical action. The drum is driven by a frequency-controlled geared motor and an extremely robust and durable toothed chain. This drive design has proved reliable a thousand times under the most severe conditions.

The frequency-controlled drive is very smooth-running and protects all the drive

components. An automatic electronically monitored system ensures that the chain is always perfectly lubricated. Specially designed drain valves on the double drums ensure that solid matter such as sand or metal particles from work wear etc. is always removed from the compartment and damage due to catalysis is safely avoided. Generously designed rapid drain outlets with ball valves that open up the entire opening ensure that drain times are very short, bath exchange is efficient and there is no risk of lint accumulating. The specially designed wash beaters assist rapid bath exchange and the efficient transport of the linen batch. All the drain valves also have clamp fasteners for ease of maintenance and can be opened without tools for inspection purposes – this is a tremendous advantage for the laundry manager as it saves time and money. The correct function of the drain valve can be checked through an inspection window in the discharge nozzle. Specially designed

steam nozzles are ideally adapted to the drum geometry. Their position on the bottom of the double drums means that the steam very rapidly enters the process water and ensures very short heating stages even when cycle times are short and a perfect heat distribution within the batch. There is no time loss like on conventional machines with simple heating boxes below the drum.



THIS PART TO BE CUT OFF

* Automatic sliding door for loading chute (e.g. for high pre-wash temperatures)