

JENSEN

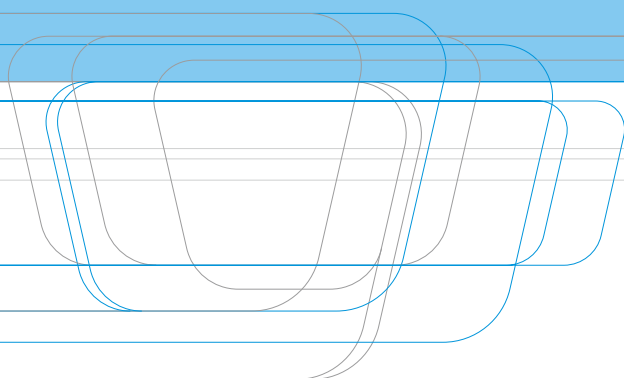
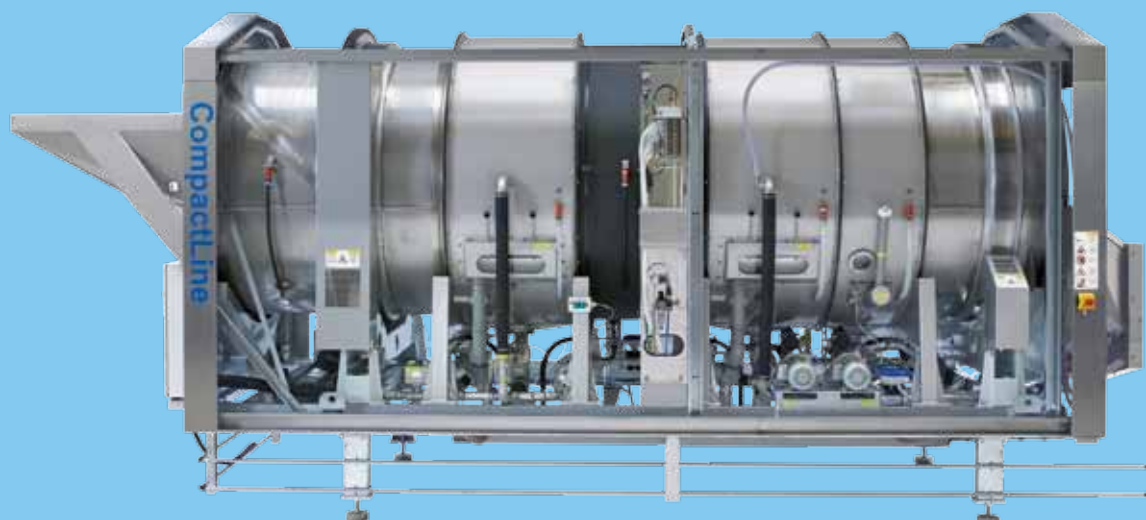


SENKING CompactLine

CL 500 / CL 600 / CL 700

Highest productivity in a space-saving design

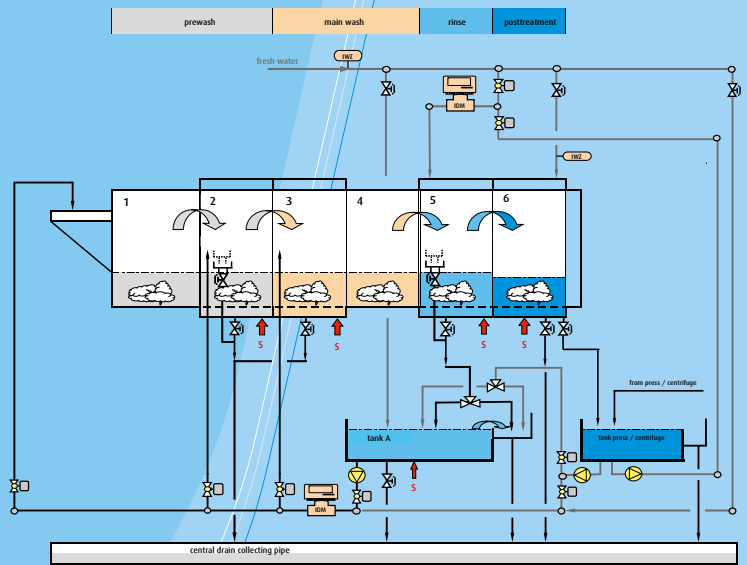
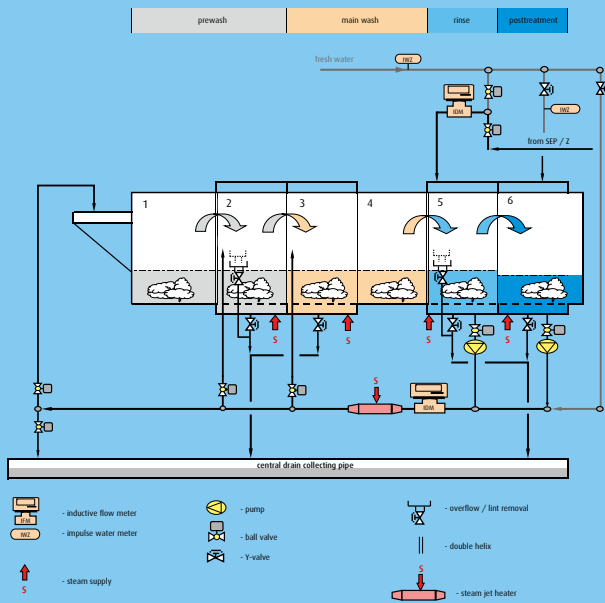
JENSEN



SENKING CompactLine

CL 500 / CL 600 / CL 700

JENSEN recognised very early the trend in the heavy duty laundry industry not only to develop resource-effective technology for large systems with a high washing capacity but also to offer suitably dimensioned, energy-efficient machines for smaller production amounts. Solutions should be offered not only for smaller laundries which process their textiles mainly on conventional washer extractors, but also for large laundries where existing continuous batch washers are operated with a reduced article range due to cost reasons. For the more complex processing of the wider textile range, alternatives are necessary which ensure both an economical operation as well as the usual continuous linen flow.



After the market launch of the „Washroom-CompactSystems“ in 2005, JENSEN enhanced this philosophy: The new continuous batch washer SENKING CompactLine was developed which is designed to process batch sizes of up to 50 kg linen in 5 to 7 compartments. The nominal hourly output is between 500 and 700 kg, with a 30 minute washing time.

Washing procedure

All models of the CompactLine have a complete batch separation from the first to the last compartment. Thus many different linen types can be treated directly after one another; empty compartments are not necessary. This leads to the highest possible flexibility in the production flow and also to excellent efficiency of the machine. This again is the prerequisite for the extremely low media consumptions.

This bath exchange process also includes the rinse process. Compared to the usual counter-flow rinsing via several compartments, the bath exchange process offers a much more precise and batch-specific treatment. The rinse process can be programmed separately for each individual type of linen and the rinse water can also be dosed much more precisely. This leads to enormous savings of fresh water but also excellent rinse results.

A cool down process after the main wash (e. g. for poly-cotton garments) can also be carried out batch-specifically.

The last compartment of the machine has a double drum with drain valve and heating. This compartment has a double function which underlines the flexibility of the machine. On the one hand, this compart-

ment can be used only for post treatments (starching, neutralisation, etc.) but on the other hand it is also possible to carry out another rinse cycle before the actual post treatment process starts.

This guarantees an always perfect rinse result, even for waterproof textiles or heavily soiled types of linen which are treated with a high alkalinity in the main wash zone. Furthermore it is possible to vary the chronology of the rinse process thanks to the bath exchange process. By this, the main wash time can be extended as the first rinse cycle starts later. The rinse process can also be extended by another rinse cycle at the last compartment. The advantage of this flexibility does not result in a reduced production capacity as the washing times normally do not have to be increased.



Drive unit with stable tooth chain.



Drain valve with snap closures and inspection glass.



Positioning of the machine components for easy maintenance.



Wide overflow boxes for efficient lint removal.

The drain valve at the last compartment also has a double function. It reduces the bath level before the post treatment, thereby saving washing additives as less media can be dosed if the bath level is lower.

The bath level can be further reduced before unloading into the water extraction unit in order to achieve better residual moisture values; more liquor is removed before transfer into the press or centrifugal extractor.

The heating at the last compartment can be used for the boiling of the drum to always have excellent hygienic conditions in the rinse and finishing area.

Furthermore, the pre-rinse and rinse areas of all CompactLines both have a double drum with wide overflow boxes which are

adjustable from the outside. The overflow boxes are located at both sides of the drum and were specially developed to efficiently remove the lint bound in the foam in order to avoid a deposit on the linen. Especially in the rinse zone, lint removal is a considerable quality criterion for linen treatment. The overflows extend almost the total width of the drum, giving a very large removal area: The positioning on both sides ensures that lint removal takes place with every pivoting of the drum.

Inspection glasses in the overflow boxes allow optimal adjustment of the bath level and control of the foam.

This excellent lint removal can be completed by other options such as a modular cascade lint filter or an auto-filter.

The complete water supply of the machine is monitored and controlled automatically with inductive flow meters. This gives process stability together with an overview of the present water consumption.



CL 600 with integrated heat exchanger "Spiraliser"

Machine versions

The CompactLine is available in two different versions:

- With reclaim tanks (UNIVERSAL principle) for nearly all applications
- Without reclaim tanks (patented SL process) for hygienically demanding types of linen such as surgery linen, textiles from nursing homes or linen from the pharmaceutical and food industries.

In order to allow for the individual requirements of each laundry, several options are available such as heat exchangers, lint filters or additional tanks.

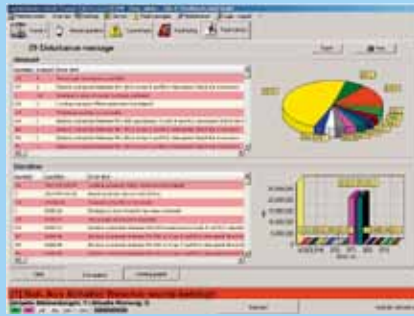
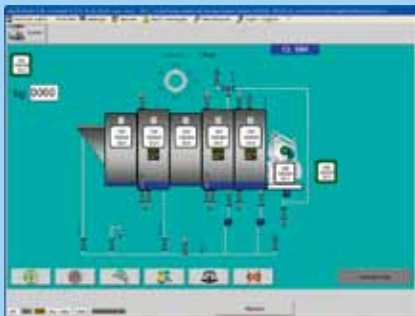
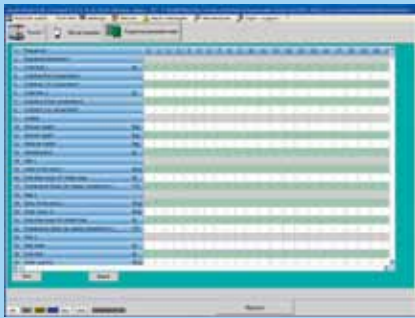
The heating of the machine can be done either by the classic central direct steam supply, or by alternative remote energy sources such as gas heating or quick-steaming units.

Technical construction

The construction of the inner drum is based on the proven construction of the UNIVERSAL continuous batch washer and also has the patented eccentric archimedean helix which uses the drum volume in an optimal way and ensures a unique stability.

The inner drum is driven by a frequency controlled gear motor and the proven, very robust and long-life tooth chain.

For smooth running of the CompactLine drum as well as a high reliability and intrinsic value, all seals and ball races are treated on a special turning lathe with the lowest production tolerances. Another focus during the development was on high maintainability. That is why the components are clearly arranged so that a very good accessibility is ensured to the limited maintenance points. All drain valves have snap closures as well as an inspection glass in the drain connection.



Example: Visualisations at the panel PC.



Modular control concept with panel PC

The machine control developed by JENSEN offers a comfortable operation with high efficiency and safety at the same time. The visualisation and operation is done by an industry PC with touch-screen. The Interbus technology of the modular control allows a cross-linking of the complete system so that every single machine in a complete washing lane can be visualised and operated on every panel PC. While the breakdown of an operating terminal of a traditional control often leads to a breakdown of the whole system, the new SENKING control offers the unique safety advantage to continue the operation of the washing system from another PC thus avoiding a production loss.

If there is a data error or loss, the adjustments previously saved on a flash card can be easily and quickly restored.

It goes without saying that the complete system can be supervised via an Ethernet interface by the JENSEN remote service.

Extensive statistics of machine and production data are included in the control.

Installation

JENSEN is pleased to assist you in planning your laundry by providing excellent advice, layouts and technical data. Authorised JENSEN distributors or JENSEN engineers should carry out the installation to ensure that it is performed correctly.

Service

In addition, JENSEN provides an extraordinary after-sales service through a worldwide network of highly qualified Sales and Service Centres and distributors, all with their own maintenance and spare parts services.

Call us...

JENSEN provides a complete range of heavy-duty equipment for the laundry industry, delivered and installed according to your specifications. Please do not hesitate to contact us for further advice and information, or visit

www.jensen-group.com

Local contact

www.jensen-group.com